

Year 7 Welcome

2026 - 27



TABLE OF CONTENTS

WELCOME TO COWES ENTERPRISE COLLEGE

Welcome to CEC	4
Welcome from the Year 7 Transition Team	5

TRANSITION DAY INFORMATION AND GUIDANCE

Transition day and information evening	7
Transition day guidance sheet	8
Important dates and virtual tour	9

PASTORAL SUPPORT AND SEND

Care, guidance and support and the pastoral team	11
Special Educational Needs	12

CURRICULUM AND ENRICHMENT

Curriculum information	14
Life Science and Everyone Matters curriculum	15
Learning and Library	16
Clubs and Enrichment	17

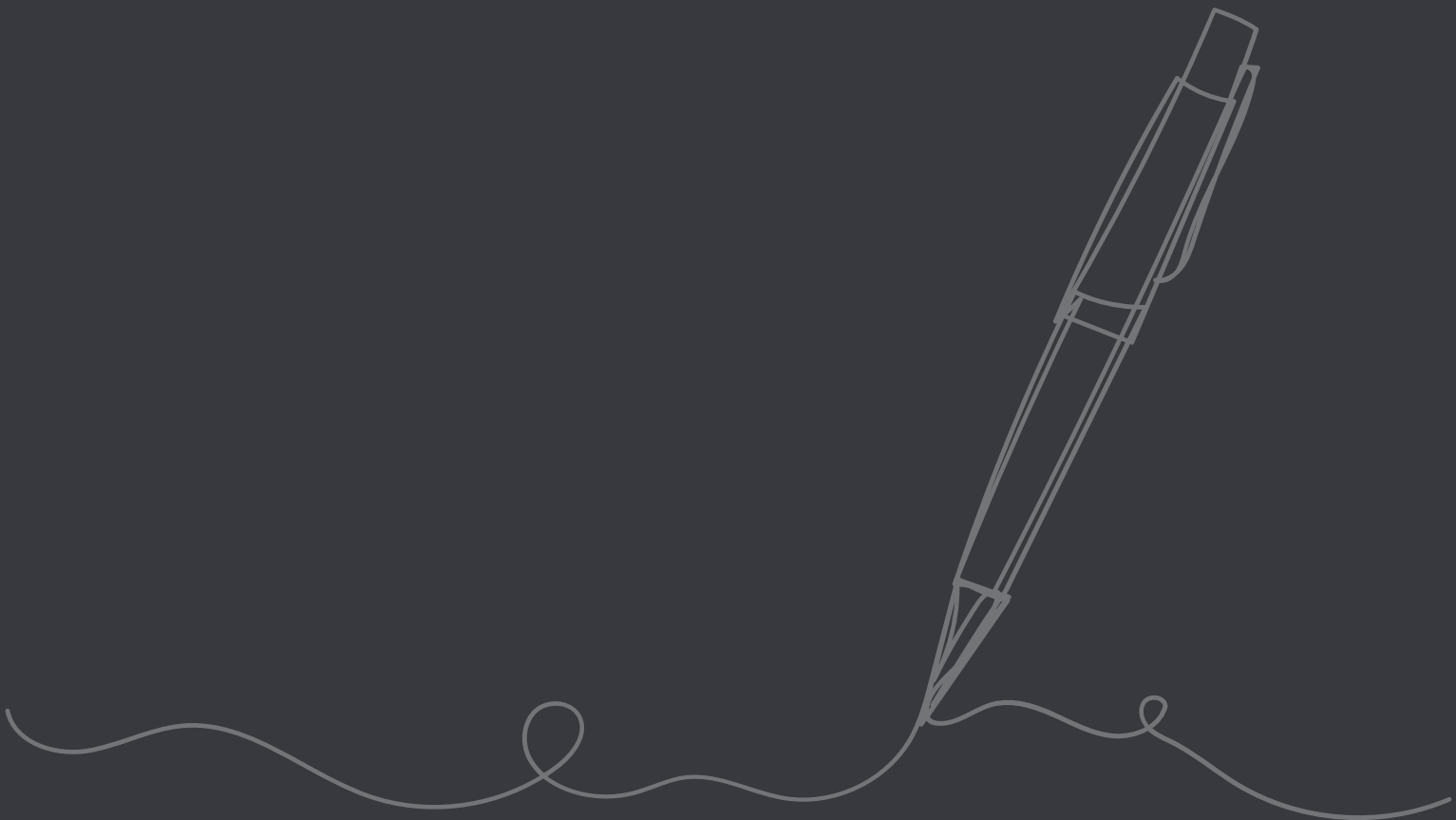
UNIFORM AND EQUIPMENT

Uniform and PE Kit	19
3G Pitch footwear and Equipment	20

WHAT TO EXPECT AT COWES ENTERPRISE COLLEGE

Rewards, sanctions and attendance	22
Transport, school meals and lockers	23
Home-academy agreement	24
Home-academy communication	25

Welcome to Cowes Enterprise College



Welcome to CEC



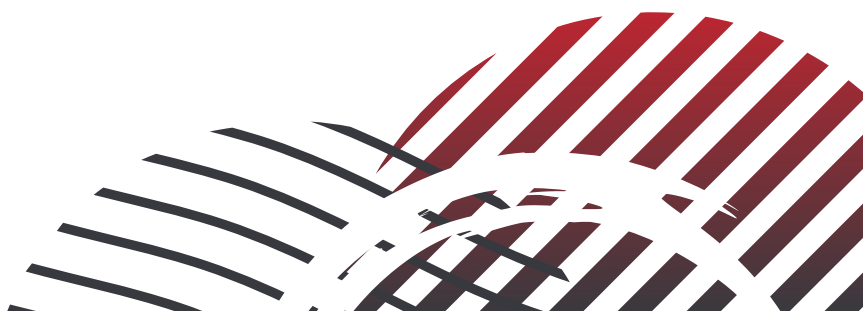
We are delighted to welcome you to Cowes Enterprise College, a successful and supportive academy.

Cowes Enterprise College is a dynamic and yet disciplined place to learn. We benefit from the guidance and ability to share what is best across the Ormiston Academies Trust.

In recent years we have consistently achieved progress that places us highest for the Isle of Wight. We aim for all of our students to achieve excellent academic results which will enable them to go on to university or apprenticeships. Indeed, many gain places at top Russell Group universities, including Oxbridge, well-equipped to study a wide array of courses ranging from Medicine, Engineering and Law to the Arts. Yet we are also an inclusive academy which embraces every type of student and we believe that anyone can excel. This philosophy is at the core of what Cowes Enterprise College is all about.

Our curriculum is innovative and flexible, meeting the needs of an individual student. Throughout their time at Cowes, students are provided with an impressive range of subject choices. We teach everything from Personal Development to Music, Psychology to Spanish, Graphics to Design Technology, Economics to Physics, Computing to Sociology. Our passion for learning and enjoying the challenge, however, extends well beyond academic life. We also work hard to develop the cultural, sporting, moral and social side of our students and our school year is packed with sports tournaments, drama productions, creative showcases, clubs, trips and charity and social action work. We are known for our strong relationships between staff and students which allow for individual talents to be nurtured and developed.

Our facilities are superb, with an inspirational campus building, extensive IT facilities, large expansive playing fields, the only full size all-weather flood-lit pitch on the Island and our dedicated year 7 only courtyard. We also have exceptional post-16 facilities with designated study, support and social areas. Our staff are true teaching experts and continue to develop further through our collaborative CPD programme and networks.



Welcome from the Year 7 Transition Team

At Cowes Enterprise College we believe that it is vitally important that our students have as smooth a transition from primary school as possible.

We feel excited about welcoming you and your child to our community here at Cowes.

We are very much looking forward to the academic year 2026 - 27 and working with our new year 7 students on **Tuesday 7th July**, when your child will have the opportunity to experience life at Cowes Enterprise College with a transition day.

The Transition Team will also be based in reception to answer any questions and we look forward to seeing you.



Dr J Milligan
Assistant Principal



Mrs C Thomas
Head of Year 7

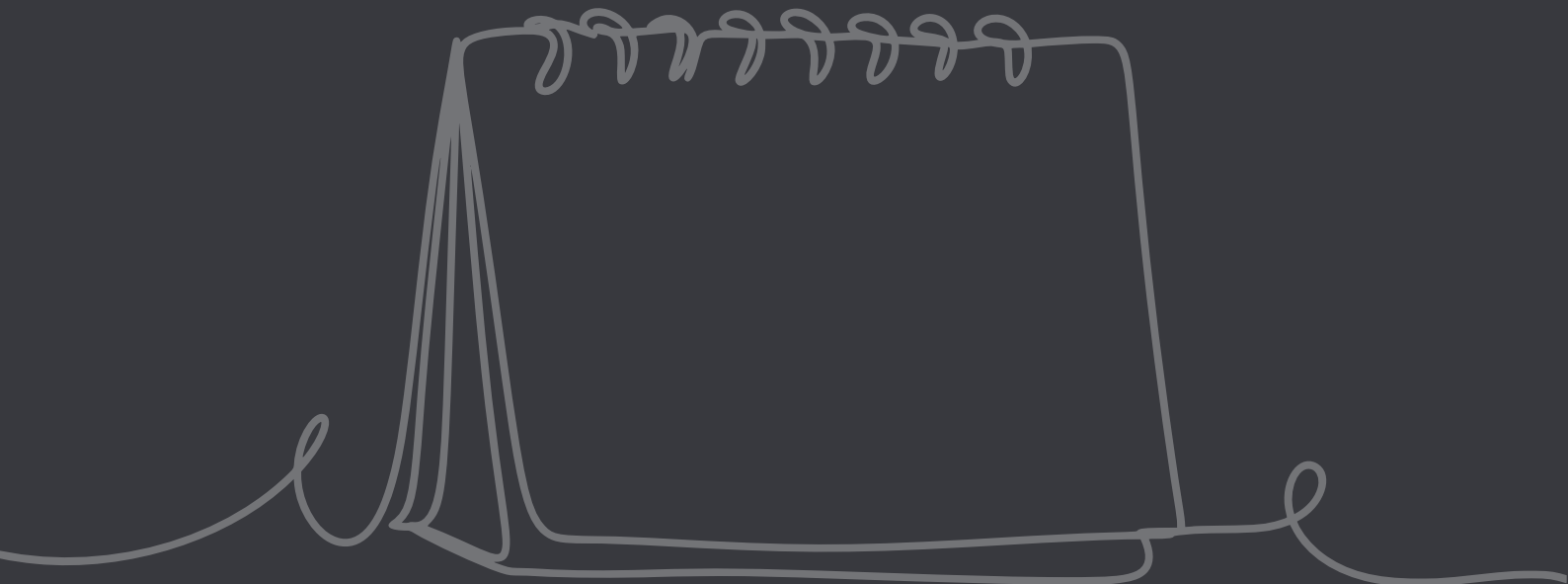
Dr Milligan, Assistant Principal, oversees the transition process and works closely with a wider transition team at the academy to ensure the transition from primary to secondary school is as successful as possible.

Our Head of Year 7, Mrs Thomas, works closely with students to ensure they are able to thrive academically and with confidence. As a non-teaching member of staff she has the time during the day to deal with many day-to-day issues that affect the students in Year 7, working closely with form tutors and teachers and managing the way in which the academy checks on the progress of Year 7 students.



Transition Day

Information and Guidance



Transition Day



Tuesday 7th July | 8.30am – 2.45pm

The aim of the day is to provide each student with a flavour of the learning they will experience with us in September and for them to familiarise themselves with the staff dedicated to their care and all of the routines and expectations of the academy.

Please complete the photo consent form included in the transition pack to allow us to share pictures of your children on the Transition Evening. We hope that all students enjoy their day with us and by the end of the day, feel happy and secure about their transition to our academy in September.

Each student will receive their personalised timetable on the morning of transition day which will allow them to sample a variety of different lessons.

Transition Information Evening



Tuesday 7th July | 6pm – 7pm

We would like to invite all parents and carers to a 'Transition Information Evening' on Tuesday 7th July from 6pm – 7m. You will have the opportunity to meet the transition team at Cowes, have a look around the school, and see what work has been produced during that day.



Transition Day Guidance Sheet



Arrival

Students need to arrive by 8.30am through the main college reception doors. They will be seated in the Main Inspiration Zone and will then be greeted by our Senior Leadership Team and Transition Team to prepare to start their day.



Dropping off

Parents and carers can drop their children off outside the main entrance. Staff will be on-hand to greet students as they arrive and our First Aid Coordinator will be available for medical information. Please ensure that no drop-offs occur on the zig-zag lines directly opposite the academy.



End of day

The day finishes at 2.40pm, and we will make sure year 6s are the first out of the building. If you are waiting for your child, please do so on the left-hand side of our concourse as you face our reception, so we can easily identify you. If collecting by car, there are places either side of the main building as is the case with the morning drop off.



Equipment required

We ask that all students arrive ready to learn. They need to arrive in their primary school uniform and can bring a rucksack to hold their personal items. They will also need a school bag and a pencil case containing a minimum of: pens, pencils, ruler and rubber. A Casio fx-83GTX calculator is compulsory for September. It may be helpful for students also to bring a small diary to make notes during their visit. We ask that every student brings a water bottle with them for the day. There are facilities to re-fill this during break and lunch.



Break and lunch

The students transferring on the day will benefit from a slightly longer break and lunchtime to allow them time to become accustomed to our routines and procedures. There is a dedicated inside and outside space available for them on these days, to help them settle in.

Please could we ask that all students bring a packed lunch with them to the academy on the transition day.



Notes

Please let us know of any medical conditions, including allergies, that we should be aware of prior to your son/daughter attending the transition day.

Important Dates

1st June - 10th July	Visits to primary schools
Wednesday 10th & Thursday 11th June	SEND tea parties
Tuesday 7th July	Transition Day (all Year 6 students)
Tuesday 7th July	Year 6 Parents' Information Evening at Cowes Enterprise College

Please be aware that as an academy, our term dates may vary from the local authority's (Isle of Wight Council) term dates. Please ensure that you check our term dates on our website before booking any holidays. <https://cowesec.org/key-info/term-dates>

Data Collection

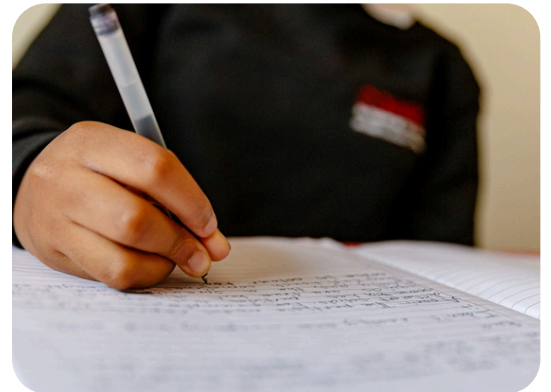
It is important to fill in all of the data collection and parental consent forms included in the electronic transition pack. Please complete these online via the link sent via email.

If you require a paper copy of the transition pack and data collection forms, please contact the main academy reception.

The forms will need to please be completed by Friday 6th June.

360-degree Virtual Tour and Videos

Please visit our website to access our 360-degree virtual tour of the academy where you can interactively look around the school, click on links to view information about each subject's curriculum and view the entire site and surrounding area from above.



Pastoral support and SEND



Care, Guidance and Support

We strive every day to create an education that sees the young people of Cowes and the community beyond get the very best, not just in an academic sense but also in developing the skill set, confidence, attitudes and aspirations that will provide the catalyst for sustained success throughout their lives.

Our ambition is:

- To empower students to become independent and confident with the self-belief that they can influence change
- To provide the support and guidance to teach them skills they will need in adulthood
- To encourage and develop in all members of the academy, our core values of:
 - Anyone can excel
 - Enjoy the challenge
 - Be inclusive
 - Share what is best

The safety and wellbeing of students are of paramount importance for us at the academy and our pastoral system is designed to ensure each individual child has both the support and guidance that they need throughout their learning time with us. We actively encourage students to develop the key skills of teamwork, communication and respect in all that they do.

The Pastoral Team

Each year group has a head of year that travels up through each key stage with them.

Our SEN team also deliver a range of specialist interventions to support students in a range of areas, including ELSA support, social skills, motor skills, regulation support, study skills and speech, language and communication. Our range of interventions are co-ordinated by our Inclusion Intervention Lead, Miss Carrie-Anne Cooke.

Each student is assigned to a tutor group, where they have access to quality mentoring and support.

To recognise the maritime heritage of Cowes, we have named our house system after four famous J-class yachts, and each student joins the 'crew' of one of the four yachts:

- **Britannia**, **Endeavour**, **Enterprise**, **Shamrock**.

Each crew focuses on developing a sense of group identity while linking with the community and involving students in intra-academy competitions



Special Educational Needs

We welcome everyone into our community and the academy endeavours to deliver inclusive provision to ensure that all students, including those identified with special educational needs or disabilities, can enjoy and benefit from a broad and balanced education.

All students have access to the curriculum at an appropriate level, so that they may achieve their full potential.

The academy has been designed to be fully accessible to students with a physical disability, with lifts and ramps for wheelchairs.

We are committed to narrowing the attainment gap between students with special educational needs and other students. In addition to our inclusive Universal Offer, we have a range of personalised learning interventions and opportunities to support this where indicated. We are very proud of all our students and their achievements, both within and outside of the classroom.

Mrs Slade-Carter and her team gather detail about any individual SEND needs and current support from primary schools, to ensure that inclusion continues into and throughout secondary school. Information about students with SEND is prepared in line with the information gathered from primary schools and distributed to all relevant teaching staff, so that they are ready to welcome all to their classes from day one.

During the autumn term the SEND team continue to monitor and review all support, to ensure that provision for year 7 students remains appropriate whilst they transition into life at secondary school. The SEND team base is called OASIS.



Curriculum and Enrichment



Curriculum

In Year 7, all students study the following subjects:

- English
- Mathematics
- Life Science
- Physical Science
- MFL
- Geography
- History
- Art
- Technology
- Computing
- Music
- Physical Education



Our curriculum is planned around the expectation that all students need to remain in education or training until they are 18. Students choose examination courses as they move into Key Stage 4. The 'options' process for GCSEs starts in year 9 where they will be able to choose a number of different subjects to study. Careers education and guidance is also available throughout every year group in order to prepare students for their next steps in higher education, careers and university applications.

Enhanced English and Maths SEN Support



To further support students with SEND, there is additional learning support in some of our English and Maths groups; this is designed to provide targeted support, bridging the gap for students to more quickly reach age-related expectations in English and Maths. Students will be supported by intervention trained staff, alongside their subject teacher, to learn and generalise strategies and tools that students can then take with them and apply to their learning across the full breadth of the secondary curriculum, to support their transition.



Everyone Matters (EIM) PSHE/Citizenship curriculum

Everyone Matters (EIM) is the academy's PSHE/Citizenship curriculum designed to 'educate for life'. This curriculum draws together our:

- Personal, Social and Health Education (PSHE)
- Spiritual, moral, social and cultural development (SMSC)
- Relationships, Sex and Health Education (RSHE)
- Citizenship
- Safeguarding
- Mental health
- Careers education
- Enterprise, financial capability and work-related learning
- Study skills
- Character and resilience personal development
- Equality and diversity education
- A thread of modern British values
- Religious studies
- A broadening awareness of cultural capital and social action to create and influence change



This curriculum both broadens horizons and enriches lives while preparing all children for the modern world.

During Key Stage 3, students study these topics within our PSHE/Citizenship curriculum. This curriculum offers students the opportunity to further explore the content through practical and scientific activities, as well as drawing their findings to discuss and access the vital and statutory topics. At Key Stage 4, students progress onto a curriculum where there are opportunities to work in groups, further develop oracy and literacy skills are extended as they explore the age-appropriate content.

The four main key aims of this curriculum is to ensure that our students are:

- Fully equipped with the resilience to take on challenges to excel in the modern world
- Able to question and interact with the world with awareness, confidence and respect
- Able to have tolerance and be able to live successfully in a diverse world
- Fully equipped with the self belief that they can influence change



Learning

Our curriculum in year 7 is designed to build on the range of activities that students have already experienced in their primary school, while also introducing several subjects that they may not have studied before.

We are aspirational for all children and we challenge our students to stretch themselves by mastering challenging concepts and by learning demanding but engaging subject content. We are keen for our students to take responsibility for their learning and through the support provided by our teachers, our students take pride in their work and present a positive attitude to lessons.

Homework is set by departments through the online tool SatchelOne. We have designated homework computers in the library for those who do not have access to a computer at home.

Library

At Cowes Enterprise College we are committed to promoting whole school literacy across all year groups in order to support their learning and raise standards. This is supported by our large library with a dedicated librarian. The library is open before school, every break and lunch time and after school until 4pm and welcomes students to read, choose a book to borrow, work, revise or play a quiet board game.

Our library has a huge variety of books on offer including fiction and non-fiction as well as a selection of books covering mental health, stress, neurodiversity, body image, self-esteem, anxiety, coping with exams and so much more.

Please visit our website to view our recommended reading list for Key Stage 3 students. These include a wide range of classics, modern and current issues, challenging reads, science fiction, fantasy, humour and sports fiction books:

<https://cowesec.org/for-students/reading>



Clubs

We run a wide and inclusive programme of clubs for students of all years 7–13, including: chess club, a wide variety of sports clubs, drama club, boat building, Duke of Edinburgh's Award (year 9+), Combined Cadet Force (year 8+ with year 7 being able to get involved with Military Skills Club before transitioning into CCF in year 8), Warhammer and many more.

Every year we hold an 'Enrichment Fayre' which offers every student the opportunity to explore and learn more about the huge variety of extracurricular opportunities of offer at Cowes Enterprise College.



Enrichment

Enrichment at Cowes is at the heart of our curriculum. In all year groups, we run the Cowes Charter where we encourage your son or daughter to participate in a wide range of enrichment activities to enable them to achieve both inside and outside of the classroom.

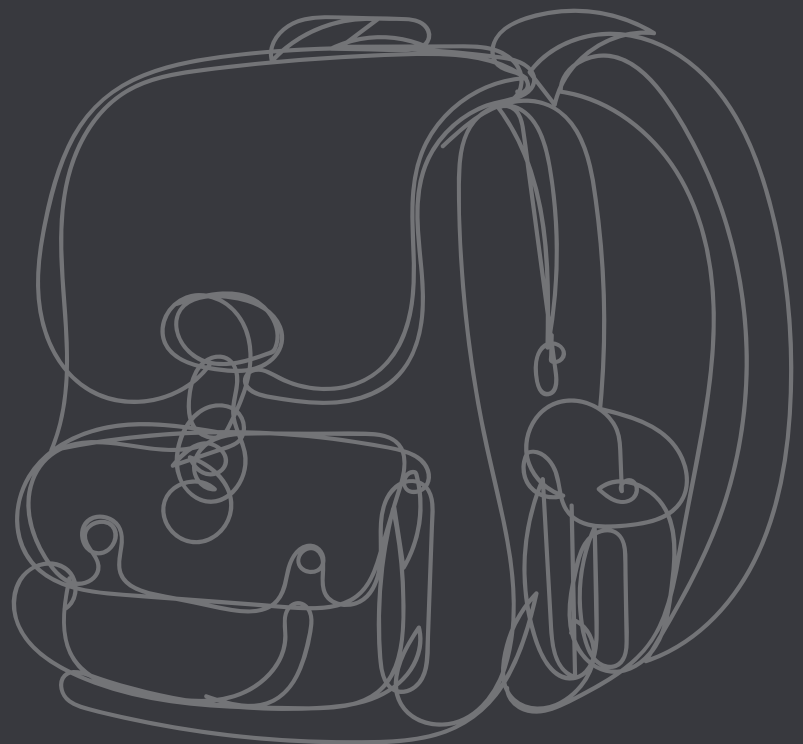
The Cowes Charter is part of our guarantee to every Cowes Enterprise College student. In addition to high levels of attendance and academic progress, they will build a portfolio of experiences throughout each year, based on access to a wide range of experiences, to develop both their academic and personal skills to be the best they can be.

The charter covers five key areas:

- Perform for a variety of audiences
- Take advantage of enrichment opportunities
- Make a contribution to society
- Show all-round learning
- Be involved in the wider life of the school



Uniform and Equipment



Uniform

Our uniform provider is **The School Shop** (<https://iwuniform.co.uk/collections/cowes-enterprise-college>). They are a trusted provider offering high-quality garments, a user-friendly online ordering system, and efficient delivery.

Required items
CEC logo white polo shirt Alternatively, a plain white polo shirt may be worn under a CEC logo black jumper
CEC logo black jumper
Smart black trousers , which must be loose-fitting and about the same length from knee to ankle (not skinny fit or cropped length) Plain black pleated skirt , which must be worn at knee length or below unless worn with plain black tights or black leggings underneath Smart black shorts , which must be worn at knee length or below unless worn with plain black tights or black leggings underneath
Plain black school shoes or trainers , which must not have any additional colours, stripes or logos

Accessories, hair and make up:

- One simple stud or sleeper may be worn in the lobe of each ear
- A wristwatch may be worn, but smart watches are not allowed
- Non-visible make up
- Hairstyles should be moderate and appropriate for school, including natural hair and protected hairstyles associated with racial, ethnic and cultural identities

Year 7 students should not be wearing shirts, blouses, blazers, ties or tartan kilts or items from the old CEC uniform.

The academy logo black jumper, academy logo polo shirt and academy PE top are branded and only available from The School Shop.

Black trousers, smart black shorts, black pleated skirts and plain white polo shirts can be purchased more widely, such as from supermarkets, independent retailers and second-hand shops (subject to availability).

Sometimes good condition second hand Cowes Enterprise College branded academy uniform can be found in second hand retailers.

Please ensure that all of your child's uniform items and equipment are clearly named, including coats and PE kits.

PE Kit

Required items
Academy PE polo shirt with CEC logo
Academy black shorts or plain black shorts
Academy red and black socks or plain red or plain black sports socks
White or black ankle socks for indoor or outdoor for summer activities
Non-marking trainers (separate from school shoes)
Football or rugby boots for 3G pitch
Shin pads and mouthguard
Hair tie
Earring tape, if earrings are unable to be removed

Optional extra PE uniform items
Alternatively, a plain black crew neck jumper or school V neck black jumper can be worn
As an alternative to black shorts, students may wear either academy leggings with the CEC logo, or plain black jogging bottoms



What to expect at Cowes Enterprise College



Rewards and Sanctions



We believe in rewarding hard work at the academy and in recognising the tremendous efforts and achievements that occur daily by our students.

Occasionally, students behave in ways that are unacceptable. Staff at the academy aim to deal with this in the most effective way to help students learn acceptable standards of behaviour. We will work hard to communicate any problems to parents as quickly as possible. For further information, the academy's behaviour policy can be accessed via our website.

Attendance

The link between school attendance and achievement is proven. The academy expects students to be in school every day and does not endorse term-time leave unless under exceptional circumstances. We have a dedicated Attendance Officer who is able to work with families to support student attendance where necessary. The academy also works closely with the local authority Education and Inclusion Service (EIS) to further support our high expectations of school attendance.



Transport

Transport to school is currently dealt with by the Isle of Wight Council school transport team. To view the services available please visit the Isle of Wight Council website at: <https://www.iow.gov.uk/schools-and-education/home-to-school-transport/>

School Meals

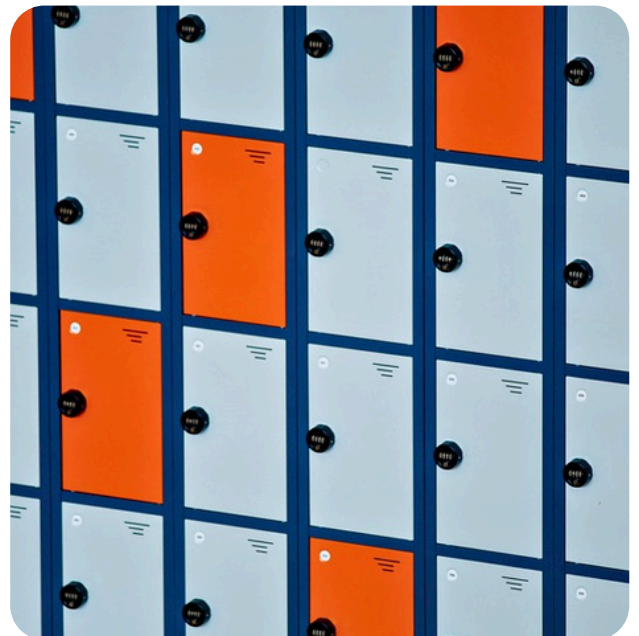


The service is cashless, enabling parents to credit their children's accounts online so that students do not need to carry cash to school. Students eligible for free school meals have their accounts credited automatically and they pay for their meals in exactly the same cashless way as all students. It is possible for parents to check on what their children have been eating using the online ScoPay system.

Lockers

Lockers are available for students to leave books and equipment safely at school. Our lockers are available on a rental basis and if you wish to go ahead with the locker rental, you will have a direct arrangement with a private company, Secure Locker Rental, for that period of time. The lockers have a combination lock on the handle of each locker which is set by the student.

The cost of a locker is currently £24 per whole academic year. If you are to purchase a rental during the school year, this price will be calculated on a pro-rata basis. Following the purchase of a rental agreement, the company will then send you the number of the locker and its designated combination.



Home-Academy Agreement

At Cowes Enterprise College – An Ormiston Academy we aim for every student to be happy and successful.

It is therefore crucial that the staff, parents/carers and students work together. Our home-academy agreement clearly outlines the responsibilities of the academy, parents and carers and students.



Staff at Cowes Enterprise College will:

- get to know each student as an individual
- have the highest of expectations of each student in terms of attainment, progress and behaviour
- develop in students a love of learning and ensure that students experience high quality learning
- monitor students' progress and put interventions in place, if required
- mark students' books regularly, at least once every 5 lessons
- provide regular enrichment activities and intervention support after school
- return your calls and emails promptly, within 24 hours on school days
- provide regular updates on your child's progress
- praise and recognise students' achievement and progress
- enforce the Code of Conduct fairly and consistently

Parents and carers will:

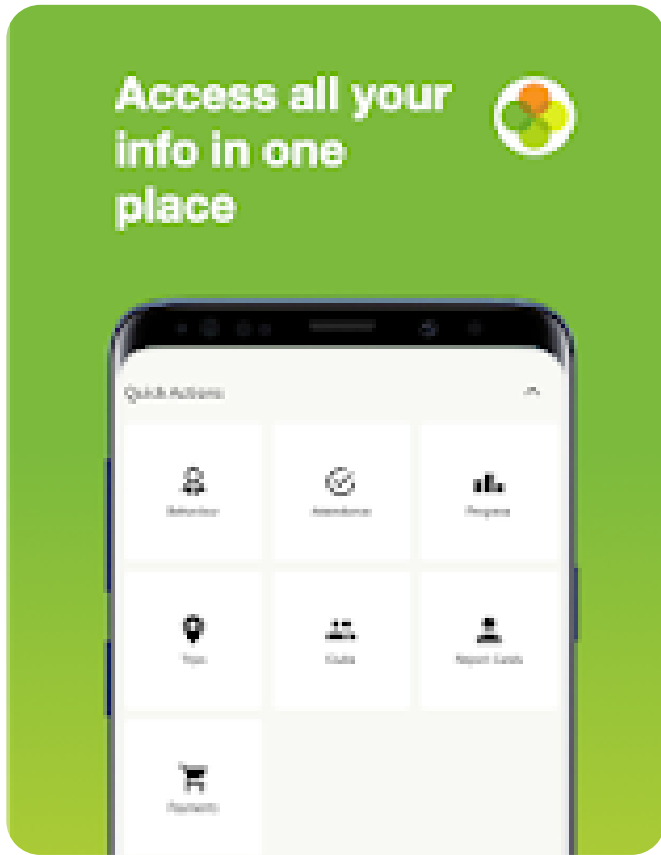
- ensure their child attends school every day and maintains an attendance of a minimum 95% across the year and is on time
- not book appointments or holidays in term time
- ensure that their child is correctly dressed in CEC uniform each day and properly equipped
- talk to their child about their homework and encourage them to complete it to a high standard
- ensure that their child attends any intervention that they are specifically invited to
- attend parents' meetings and events
- contact CEC to discuss any issues that may be affecting their child's learning or behaviour
- support all the CEC policies
- support the academy with their child following the Behaviour for Learning Policy and all academy discipline measures if they are needed
- ensure their child acts appropriately across all age appropriate social media platforms

Cowes Enterprise College students will:

- attend CEC every day and on time
- wear the CEC uniform correctly and bring the equipment they need for learning each day
- complete all learning activities and tasks to the highest standard
- strive to achieve their best in all that they do and challenge themselves to improve
- complete homework on time and to the highest standard
- follow CEC's Code of Conduct and observe all CEC rules and values at all times, accepting the authority of staff
- respect CEC's environment and buildings
- report any bullying immediately and support CEC's Equal Opportunities Policy

Home-Academy Communication

We try hard to ensure excellent communication links between the academy and students' homes. As well as contact via the telephone or in person if there is an issue, we also use:



- The Arbor Parent App, which enables parents to check the attendance, behaviour and progress of students 'live' online, and which allows us to communicate with parents via text message or email.
- Regular news updated added to the academy website.
- Parents' evenings, both to provide parents with feedback from teachers about progress and information on key events such as choosing GCSE subjects.
- Facebook, Instagram and LinkedIn
- Progress updates and reports.





ACHIEVING MORE TOGETHER



Educate for life

Crossfield Avenue, Cowes, Isle of Wight, PO31 8HB

info@cowesec.org | www.cowesec.org | info@cowesec.org