

Haiti Earthquake 2010

- On 12 January 2010, a 7.0 earthquake struck Haiti.
- The earthquake occurred on a **transform plate margin** between the Caribbean and North American plates.
- The focus was shallow at 13km deep
- The epicenter was just 25.75 km from the capital, Port-au-Prince.

Background info / Context

- Haiti is one of the poorest countries in the world.
- GDP per capita was US\$ 1,471 in 2010,
- 37% of its population was aged 15 or under,
- More than half of all Haitians lived on less than \$1.25 per day,
- 58 per cent of people lacked access to clean water
- Life expectancy was 61 years

- 220,000 people were killed.
- 300,000 people were injured.
- 100,000 houses were destroyed and 200,000 were damaged.
- 1.3 million people became homeless

- The main port was badly damaged.
- Eight hospitals collapsed.

- Crucial aid was slow to arrive due to the damaged port.
- USA sent rescue teams and 10,000 troops.
- Bottled water and purification tablets were provided.
- 235,000 people were moved to less-damaged cities
- The UK government donated £20 million.

No technology used to predict an earthquake

Prediction

3 P's

Planning / protection

No plans or protection in place

- 2 million people were left without food and water.
- People moved into temporary shelters..

Social

Eco

En

Primary

Impacts

Secondary

Social

Eco

En

- Frequent power cuts occurred.
- Crime increased - looting became a problem

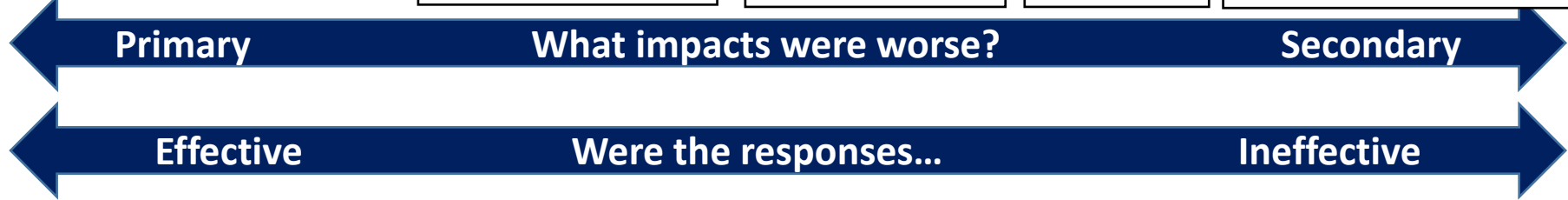
By November 2010 there were outbreaks of cholera.

Short term relief

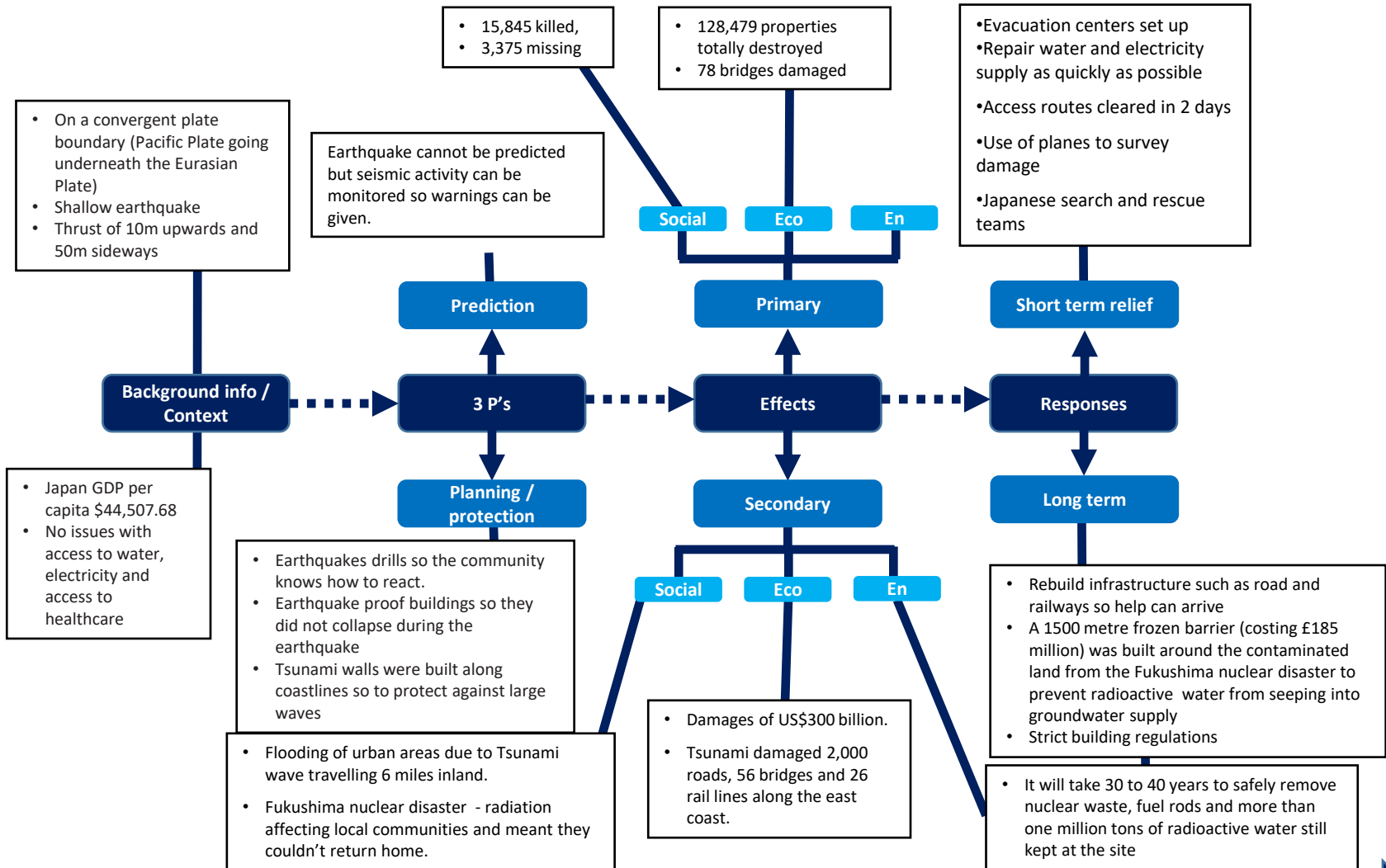
Responses

Long term

- Dependent on overseas donations and charity workers to co-ordinate
- New homes were slowly built
- 1 year on 1 million people still living in temporary shelters.
- The port needed rebuilding which required a large amount of investment.



Japan Earthquake 2011



Primary

What impacts were worse?

Secondary

Effective

Were the responses...

Ineffective